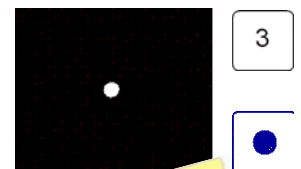
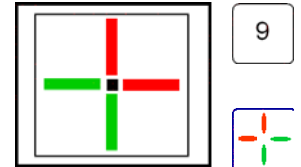
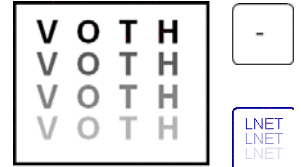
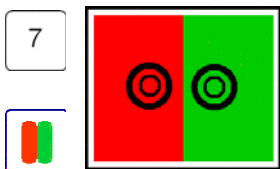
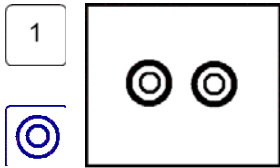
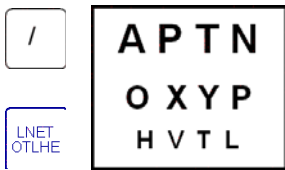


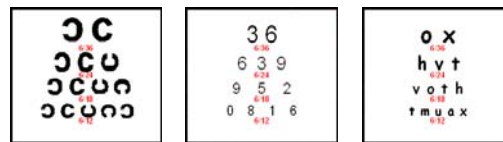
Quick and easy user guide

one way to navigate AcuScreen is to use your computer keypad

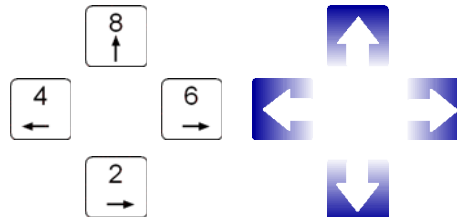


see what happens when you press this button more than once

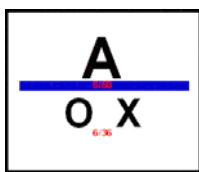
pressing **5** or **start** will always return to the centre screen



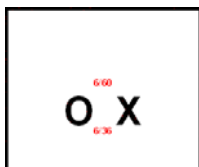
using the arrow buttons will allow you to move between optotypes / letters sizes



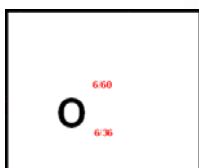
Isolation button



Use this button to underline, isolate line & isolate letter



move up and down using the arrow buttons



Mix Function



Use the mix button to give a fresh set of letters to avoid patient memorisation



Remember that you can buy an easy to use control pad with lots of pretty pictures which makes it really easy to control your AcuScreen system

Quick and easy setup guide

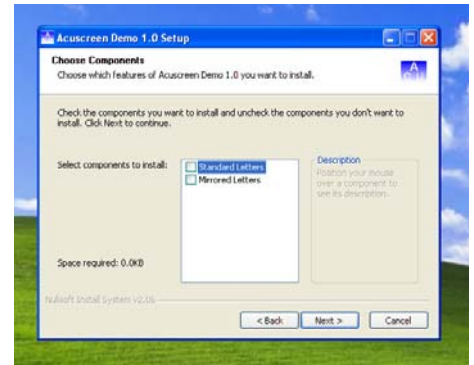
Software Installation

Insert software into you CD ROM drive and the install wizard should begin automatically

You will be asked whether you require standard or mirrored letters

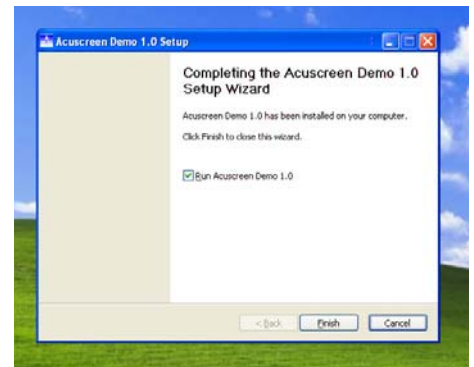
- select mirrored letters if you will be using Acuscreen through a mirror

Continue to click “next” or “install” when prompted



The installation program will alert you when installation is complete and invite you to start acuscreen

Congratulations! Acuscreen Installation is now complete and you may begin using the software




Acuscreen can be launched from the icon on your desktop or from the start menu

Each time you start you will be presented with the startup screen

- Start Acuscreen** - Takes you to the first letter screen
- Navigator** - allows you to jump to any screen
- Configure** - configure room distance etc
- Help** - Help file / instructions
- Exit Application** - Exit Acuscreen



Return to this screen at any time using the menu  button